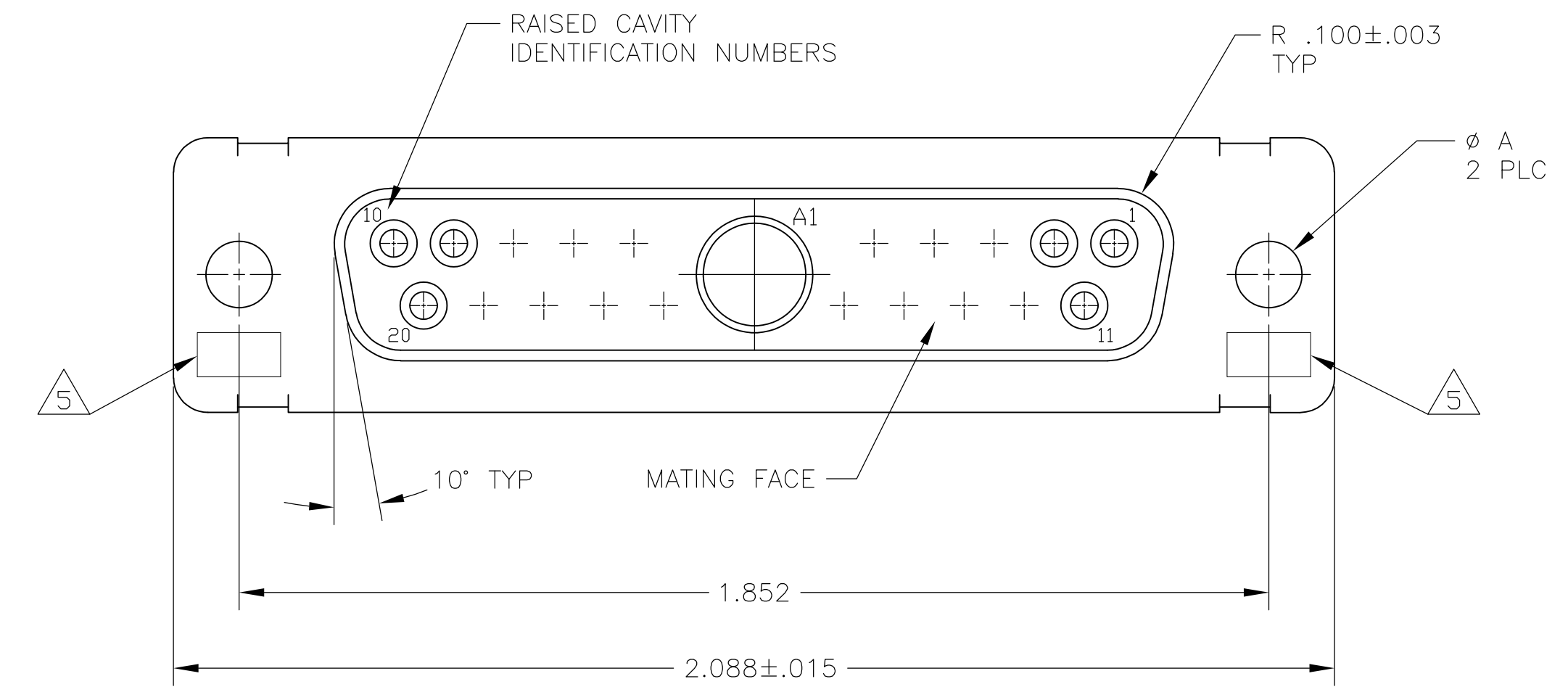
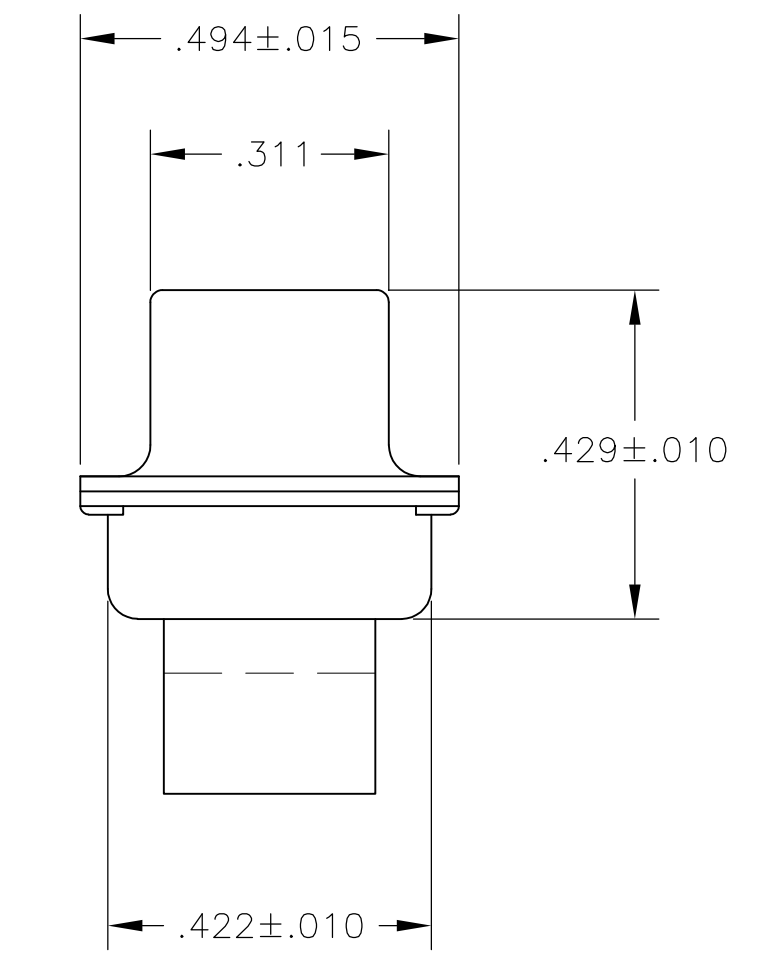
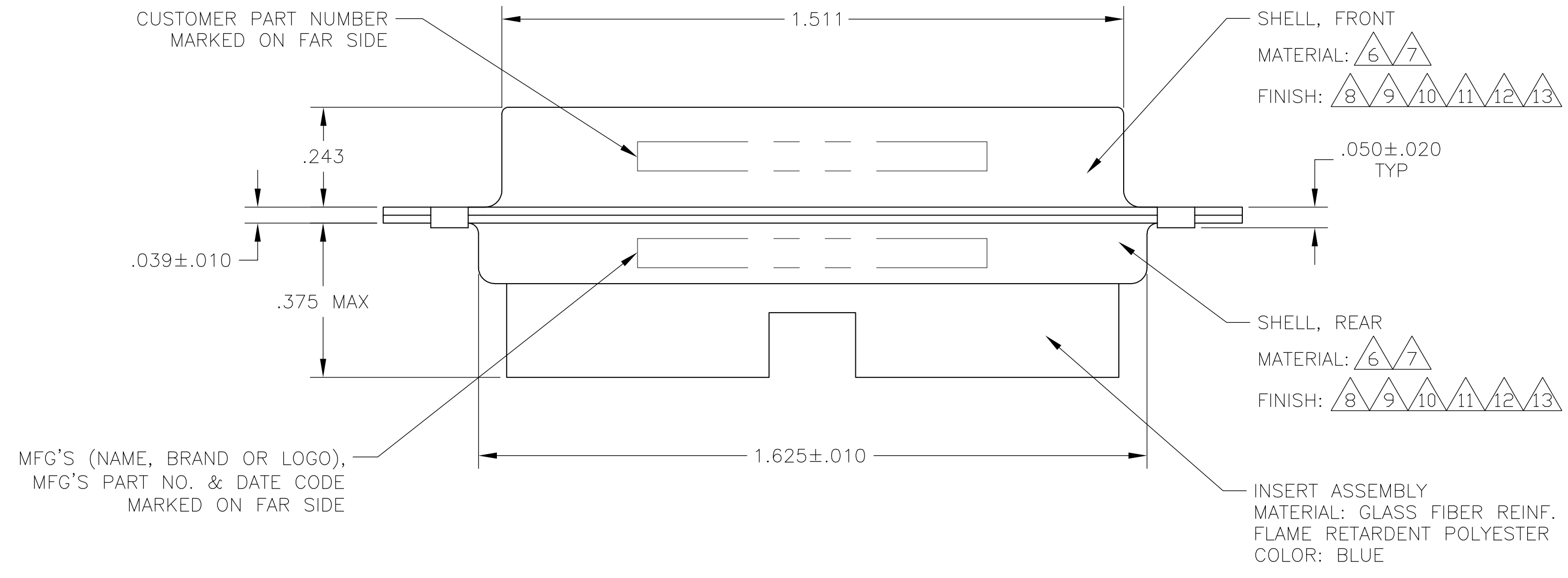


LOC		DIST		REVISIONS			
DF	X5	REV	PER	ECO	DATE	DRN	APVD
N		REV PER	ECO	05-14834	12-16-05	CT	DM
P		REV PER	ECO	08-018752	8-21-08	PK	BW



- THIS RECEPTACLE WILL MATE WITH ANY 21C1, SIZE 3 PLUG IN AMPLIMITE SERIES.
 - MAXIMUM WIRE INSULATION TO BE USED WITH THIS RECEPTACLE IS ϕ .068.
 - THIS CONNECTOR ACCEPTS (1) SIZE 8 POWER OR COAX SOCKET CONTACT IN POSITION A1, PURCHASED SEPARATELY.
 - THIS CONNECTOR ACCEPTS SIZE 20 SOCKET SIGNAL CONTACTS IN POSITIONS 1 THRU 20, PURCHASED SEPARATELY.
- 5 UL/CSA DESIGNATION STAMPED IN THIS AREA, OPTIONAL.
 - 6 STEEL PER ASTM-A-109.
 - 7 BRASS PER MIL-C-50 AND ASTM-B-36 UNS NO. C26000.
 - 8 FINISH: CADMIUM PLATED PER QQ-P-416.
 - 9 FINISH: GOLD PLATED PER MIL-G-45204 TYPE II, GRADE C, CLASS 1 OVER COPPER PER MIL-C-14550, CLASS IV.
 - 10 FINISH: TIN PER ASTM-B-545 .000200 MIN THK OVER COPPER PER AMS2418 .000100-.000200 THK OR TIN-LEAD 93/7 .000200 MIN THK OVER COPPER PER AMS2418 .000100-.000200 THK.
 - 11 FINISH: BRIGHT TIN PER ASTM-B-545 .000400-.000550 THK OVER COPPER PER AMS2418 .000050 MIN THK.
 - 12 FINISH: TIN PER ASTM-B-545 .000200 MIN THK OVER COPPER PER AMS2418 .000100-.000200 THK.
 - 13 FINISH: ZINC PLATE PER ASTM-B-633 .000200-.000400 THK WITH SUPPLEMENTARY CHROMATE (Cr3+).



6 12	.120	-	5-212526-2
6 13	.120	-	5-212526-1
6 11	.120	-	212526-6
7 9	.120	B010942-0040	212526-5
7 9	.154	311P405-14S-B-15	212526-4
7 9	.120	311P405-14S-B-12	212526-3
6 10	.120	-	212526-2
6 8	.120	-	212526-1
REMARKS	∅ A	CUSTOMER P/N	PART NO.

THIS DRAWING IS A CONTROLLED DOCUMENT.

DW	C.C.THOMAS	05-FEB-05	Tyco Electronics Corporation Harrisburg, Pa 17105-3608
CHK	A.EMADI	08-FEB-05	
APP'D	A.EMADI	08-FEB-05	NAME
DIMENSIONS: INCHES			PRODUCT SPEC
TOLERANCES UNLESS OTHERWISE SPECIFIED:			APPLICATION SPEC
0 PLC	±	-	SIZE
1 PLC	±	-	CAGE CODE
2 PLC	±	-	DRAWING NO
3 PLC	±	.005	RESTRICTED TO
4 PLC	±	-	WEIGHT
ANGLES	±	0°-30°	SCALE
FINISH	SEE CALLOUTS		SHEET
MATERIAL	SEE CALLOUTS		OF
CUSTOMER DRAWING			REV

RECEPTACLE ASSEMBLY, AMPLIMITE, 21C1
 SIZE 3, SERIES 109, COAX MIX

SIZE: A1 00779 C=212526

SCALE: 4:1 SHEET 1 OF 1 REV P